

**Tools Required:** (Not included)

- A. 5 mm Allen wrench
- B. 10 mm wrench
- C. Phillips screwdriver
- D. Flathead screwdriver

**⚠WARNING**

**⚠CAUTION:** To avoid potential shock or other injury, turn power switch OFF and disconnect charger before removing or installing the safety button. Failure to follow these steps in the correct order may cause irreparable damage.

**Step 1**

Using a 5 mm Allen wrench, loosen the four (4) hex bolts that attach the seat to the frame (Figure 1a) and remove seat. Remove the two (2) hex bolts on the Drift Bar cover (Figure 1b) and remove.

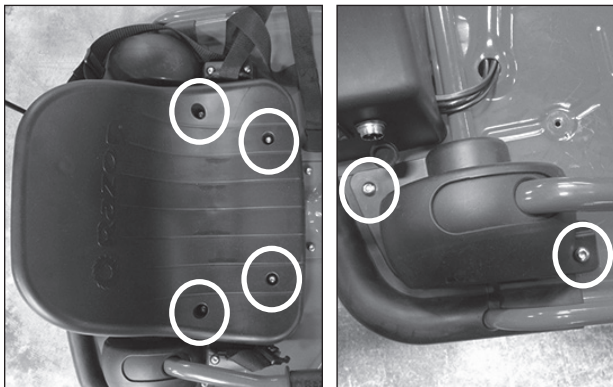


Figure 1a

Figure 1b

**Step 2**

Using a 5 mm Allen wrench and a 10 mm wrench, loosen the two (2) hex bolts on the side of the battery cover (Figure 2a) and the two (2) locknuts, located underneath the unit (Figure 2b).

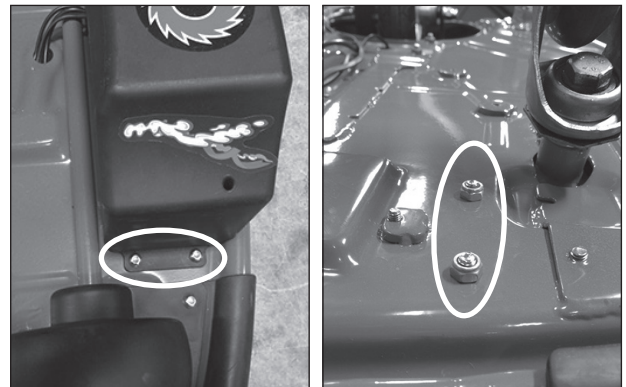


Figure 2a

Figure 2b

### Step 3

Remove the battery cover by lifting up the right side first then slide off. Be careful not to pull any of the wires that are attached to the cover.

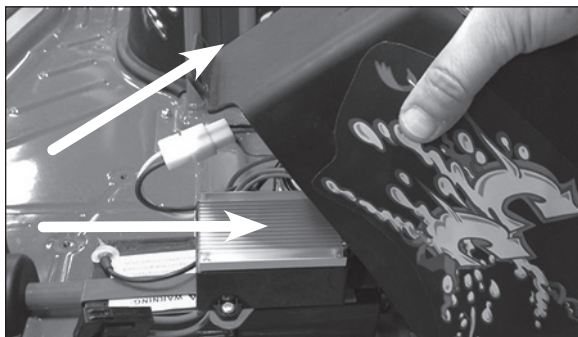


Figure 3

### Step 4

Locate the white plastic connector on the charger port that attaches to the control module and disconnect by depressing the tab on the connector (Figure 4a). Using a small pointed object, carefully depress the two (2) locking pins inside the white plastic connector attached to the safety button and remove the connector (Figure 4b).

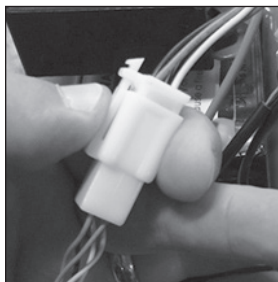


Figure 4a

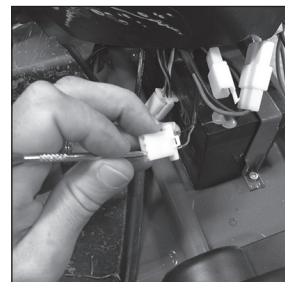


Figure 4b

### Step 5

Using a Phillips screwdriver, loosen the four (4) screws on one (1) side of the motor cover and remove cover.



Figure 5

### Step 6

Using a flathead screwdriver, carefully remove the silicone from the back of the safety switch. Push the safety button through the opening (see inset) and remove from unit.

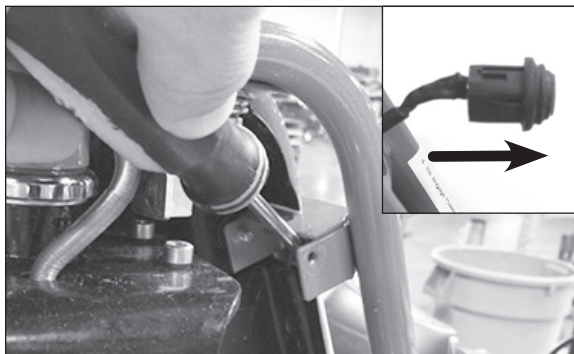


Figure 6

### Step 7

Reverse steps 1 through 6 to install replacement safety button.

**ATTENTION: Charge battery 12 hours before initial use.**