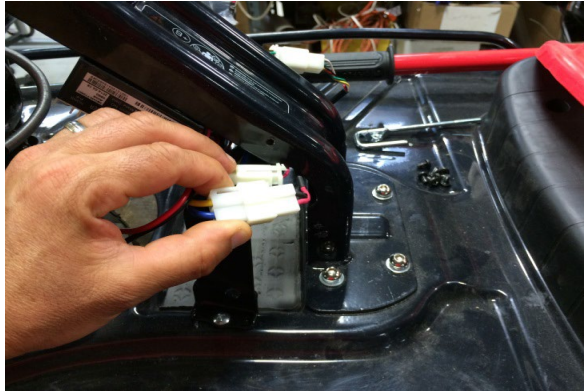


Crazy Cart 2014 Motor
Replacement Procedures



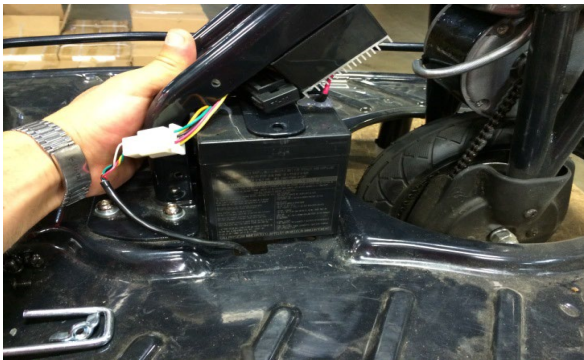
(1) Using a Phillips screw driver remove seven screws from each side of the battery cover and remove both side covers.



(2) Locate and disconnect motor connector from controller.



(3) Using a small pointy object from inside the connector depress the locking pins from the prongs and slide prongs out of the connector.



(4) To have better access remove the batteries.



(5) Cut the zip ties that hold the motor cable to the frame.



(6) Using a 5mm Allen wrench remove the 4 hex screws that hold the motor to the fork, dismount chain from sprocket and pull motor and cable out from the fork.

Reverse the procedures

Attention: Charge battery 12 hours before using