

Tools Required: (Not included)

- A. 5 mm Allen wrench
- B. 10 mm wrench
- C. Phillips screwdriver

⚠WARNING

⚠CAUTION: To avoid potential shock or other injury, turn power switch OFF and disconnect charger before removing or installing the foot pedal throttle. Failure to follow these steps in the correct order may cause irreparable damage.

Step 1

Using a 5 mm Allen wrench, loosen the four (4) hex bolts that attach the seat to the frame (Figure 1a) and remove seat. Remove the two (2) hex bolts on the Drift Bar cover (Figure 1b) and remove.

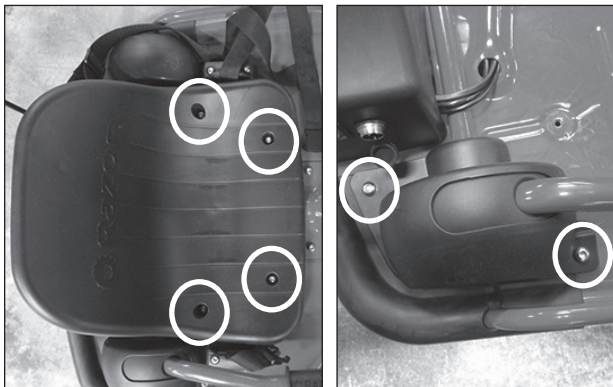


Figure 1a

Figure 1b

Step 2

Using a 5 mm Allen wrench and a 10 mm wrench, loosen the two (2) hex bolts on the side of the battery cover (Figure 2a) and the two (2) locknuts, located underneath the unit (Figure 2b).

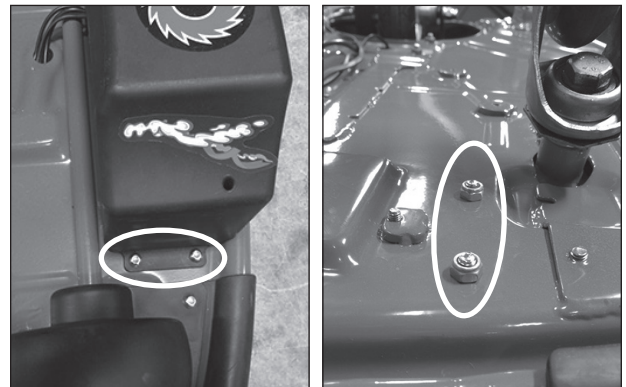


Figure 2a

Figure 2b

Step 3

Remove the battery cover by lifting up the right side first then slide off. Be careful not to pull any of the wires that are attached to the cover.

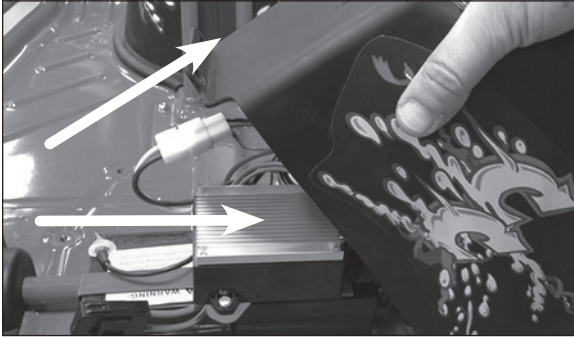


Figure 3

Step 4

Carefully turn unit over and using a Phillips screwdriver, loosen the three (3) screws on the foot pedal cover (Figure 4a) and remove. Loosen the two (2) screws on the bracket (Figure 4b) that secures the throttle wires.



Figure 4a

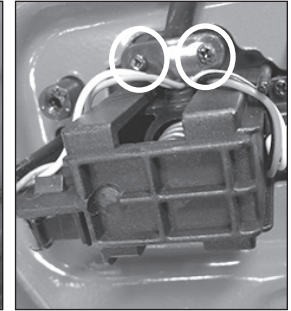


Figure 4b

Step 5

Locate the white plastic connector on the foot pedal throttle that attaches to the control module and disconnect by depressing the tab on the connector.

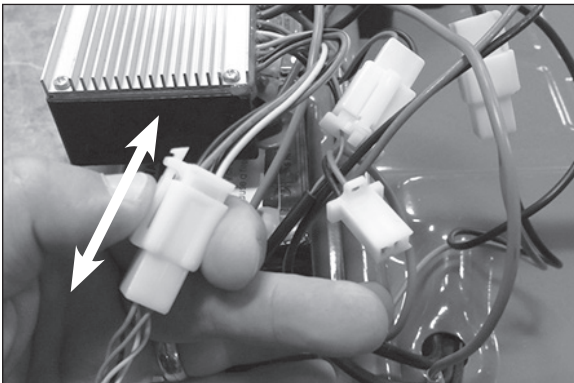


Figure 5

Step 6

Reverse steps 1 through 5 to install replacement foot pedal throttle.

ATTENTION: Charge battery 12 hours before initial use.