

Required Tool: (Not included)

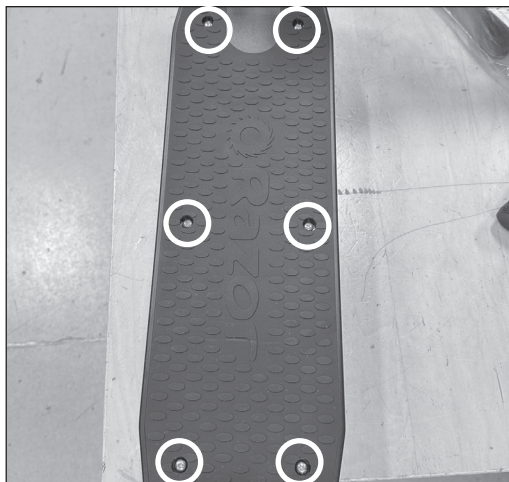
A. Phillips screwdriver

⚠ WARNING

⚠ CAUTION: To avoid potential shock or other injury, turn power switch **OFF** and disconnect charger before conducting any assembly or maintenance procedures. Failure to follow these steps in the correct order may cause irreparable damage.

Step 1

Using a Phillips screwdriver, remove six (6) screws from the deck. Remove the deck from the unit and set aside.

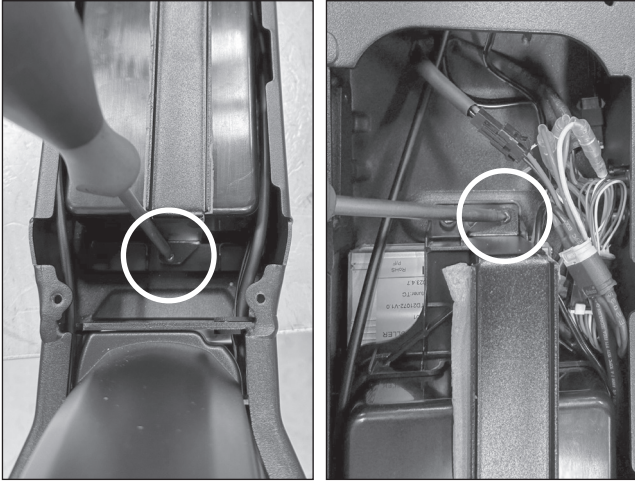
**Step 2**

Locate and disconnect all the connectors from the controller.



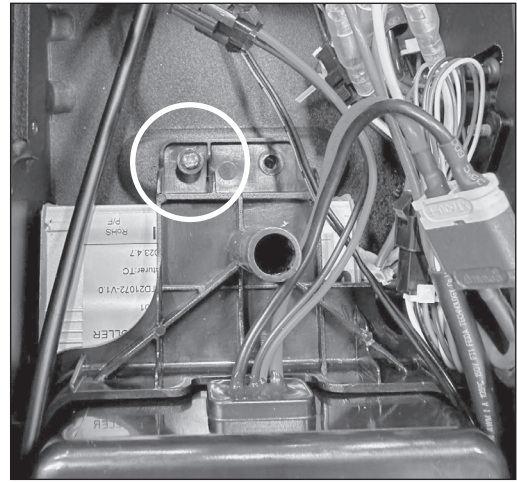
Step 3

Using a Phillips screwdriver, remove two (2) screws from the battery bracket. Remove the battery bracket and set aside.



Step 4

Using a Phillips screwdriver, remove one (1) screw from the bracket that holds the controller onto the unit. Remove the controller from the unit.



Step 5

Reverse the procedures to install the new controller.

ATTENTION: Charge battery 6 hours before using.