

**Required Tool: (Not included)**

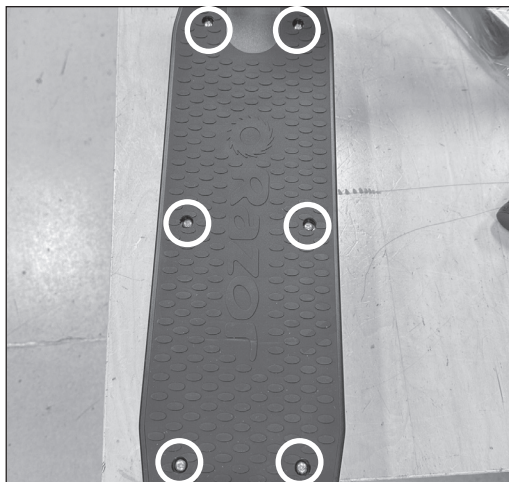
A. Phillips screwdriver

**⚠ WARNING**

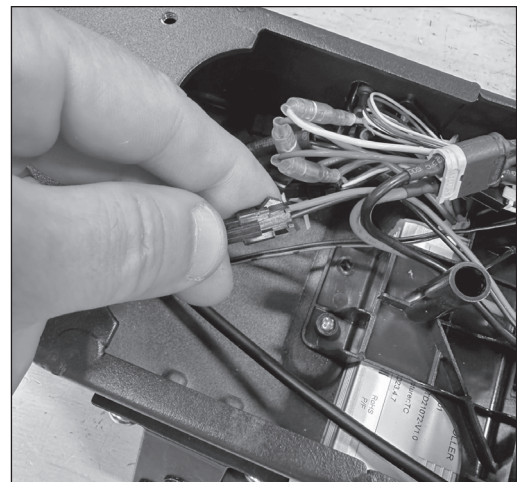
**⚠ CAUTION:** To avoid potential shock or other injury, turn power switch OFF and disconnect charger before conducting any assembly or maintenance procedures. Failure to follow these steps in the correct order may cause irreparable damage.

**Step 1**

Using a Phillips screwdriver, remove six (6) screws from the deck. Remove the deck from the unit and set aside.

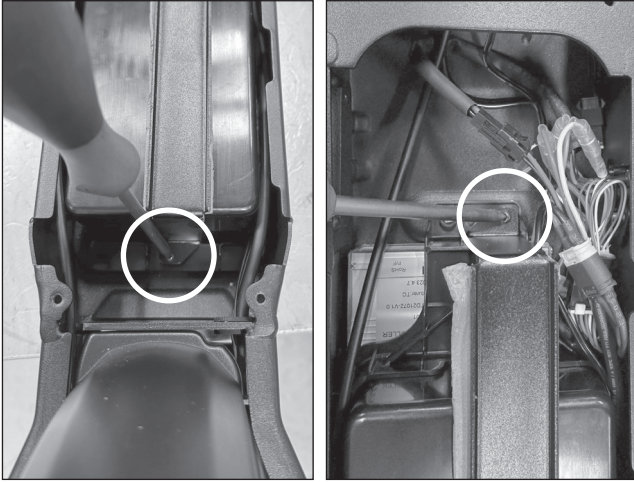
**Step 2**

Locate and disconnect the battery connector from the controller and charger port.



### Step 3

Using a Phillips screwdriver, remove two (2) screws from the battery bracket. Remove the battery bracket and set aside. Remove the old/used battery and replace with new battery.



### Step 4

Reverse the steps.

- Reattach the battery bracket on top of the battery.
- Reconnect the battery to the controller.
- Reposition the deck and attach with the screws that were removed in Step 1.

**ATTENTION: Charge battery 6 hours before using.**