

**Required Tool: (Not included)**

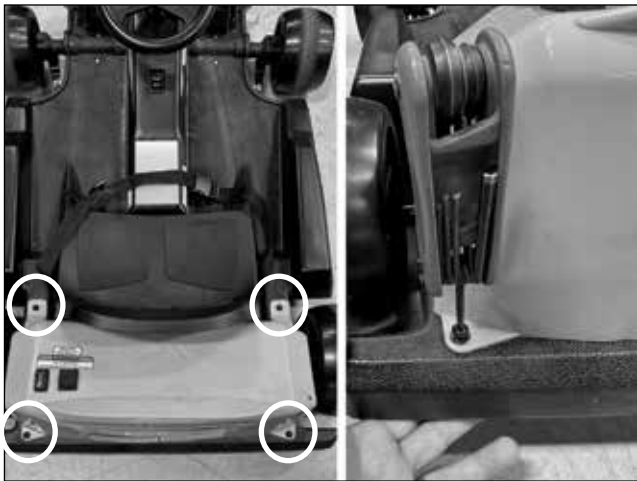
4mm Allen wrench

**⚠ WARNING**

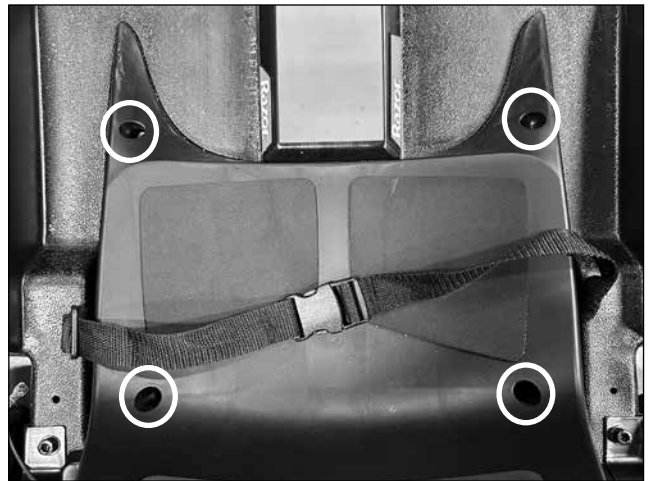
**⚠ CAUTION:** To avoid potential shock or other injury, turn power switch OFF and disconnect charger before conducting any assembly or maintenance procedures. Failure to follow these steps in the correct order may cause irreparable damage.

**Step 1**

Using a 4mm Allen wrench, loosen and remove the four (4) hex bolts that hold the battery cover. Place your finger under the bolt to prevent the lock nut from falling out of place. Save bolts and lock nuts for re-installation.

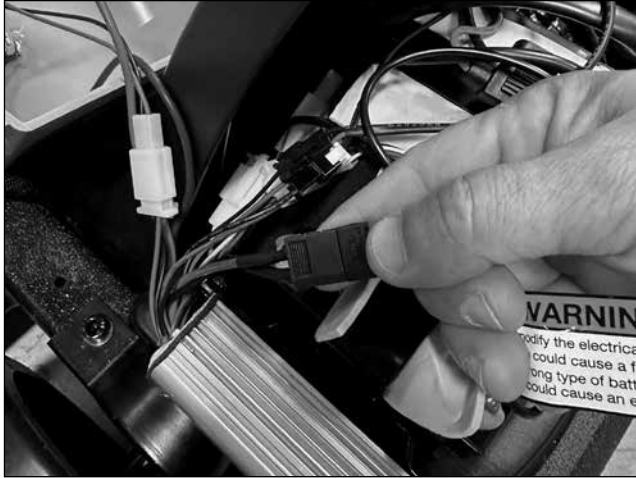
**Step 2**

Using a 4mm Allen wrench, loosen and remove four (4) bolts from the seat and remove the seat. Lift and remove the battery cover being careful not to pull the wires from the power switch and charger port. Set battery cover aside.



### Step 3

Locate and disconnect the battery connector from the controller.



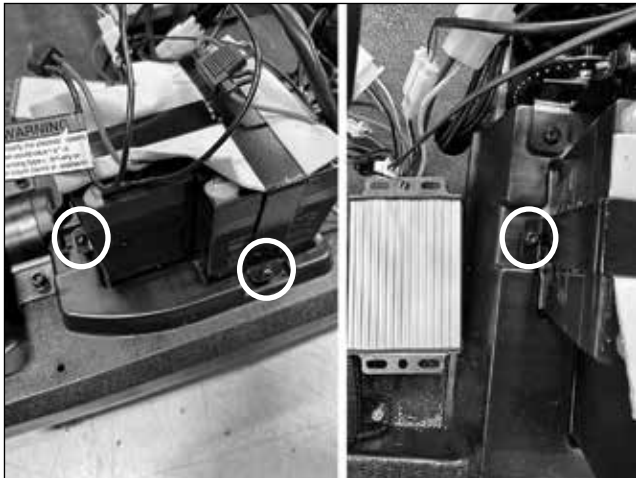
### Step 4

Using a 4mm Allen wrench, loosen and remove two (2) hex bolts that hold the controller in place and move the controller aside.



### Step 5

Using a 4mm Allen wrench, loosen and remove three (3) hex bolts from the battery bracket. Don't forget to place your finger under the bolts to prevent the lock nuts from falling out of place. Remove the battery bracket. Using both hands lift and remove the battery from the unit.



### Step 6

To install new battery, reverse steps 1-5.

**ATTENTION: Charge battery 12 hours before using.**