

Tools Required: (Not included)

- A. Phillips screwdriver
- B. 4 mm Allen wrench

⚠WARNING

Do not use non-Razor products with your Razor electric product. This item has been built to certain Razor design specifications. Certain aftermarket parts may not be compatible and will void your warranty.

As with all consumer electronics, use of compatible batteries and chargers is strongly recommended. Failure to do so may pose a fire hazard.

Examine the battery, charger and their connectors for excessive wear or damage each time you charge the battery. If damage or excessive wear is detected, do not use the charger or the product until you have replaced the worn or damaged part.

Battery connectors may contain lead and lead compounds. **Wash your hands after handling.**

⚠CAUTION: To avoid potential shock or other injury, turn power switch OFF and disconnect charger before removing or installing the batteries. Failure to follow these steps in the correct order may cause irreparable damage.

Step 1

Using a Phillips screwdriver, remove the four (4) Phillips screws on the back of the battery cover.

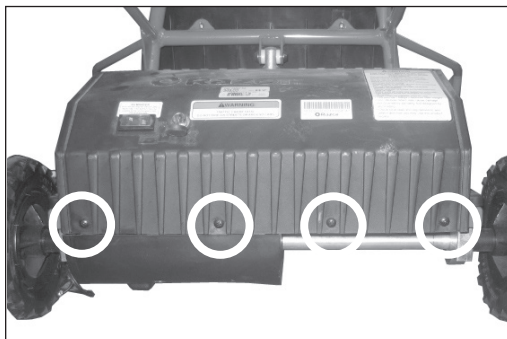


Figure 1

Step 2

Using a 4 mm Allen wrench, remove the two (2) hex bolts on the right side of the battery cover.



Figure 2

Step 3

Using a 4 mm Allen wrench and a Phillips screwdriver, remove the two (2) hex bolts and the one (1) screw on the left side of the battery cover. Be careful not to pull out any of the wires that are connected to the power switch and/or charger port when removing.

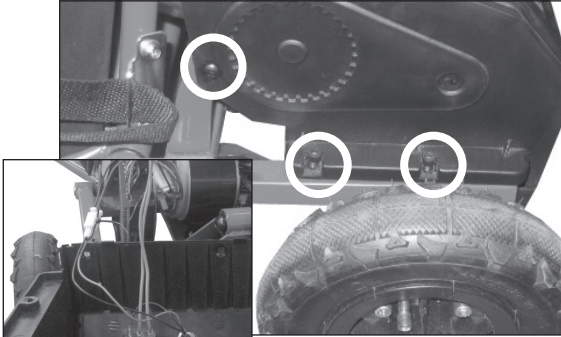


Figure 3

Step 4

Using a 4 mm Allen wrench, remove the two (2) hex bolts on the battery bracket and remove bracket.

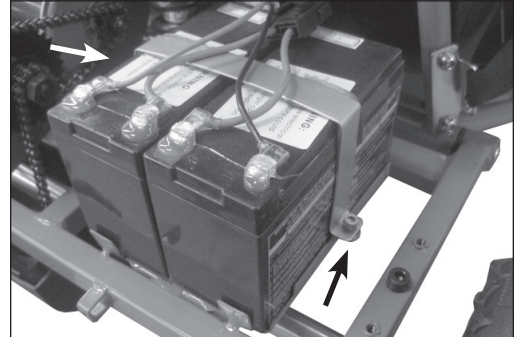


Figure 4

Step 5

Carefully cut the zip tie that holds all of the wires together and discard. Locate the white plastic connector attached to the battery wires. Disconnect the white plastic connector attached to the batteries and control module by depressing the tab.

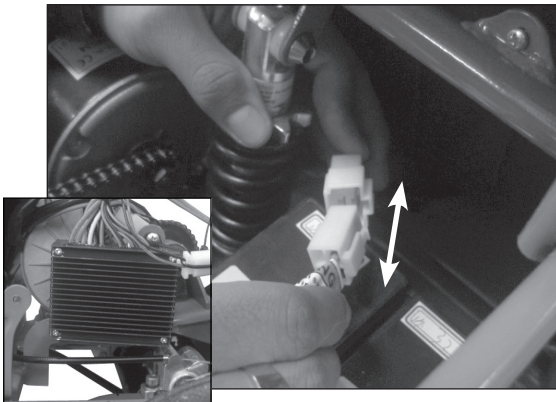


Figure 5

Step 6

Using both hands, carefully lift the batteries out of the battery tray. Refer to page 3 for battery care and disposal information.

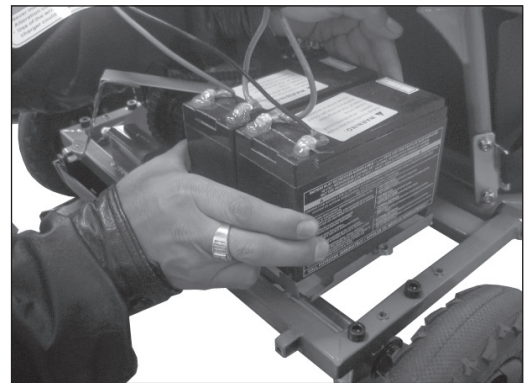


Figure 6

Step 5

Reverse above steps to install replacement batteries:

- Carefully set replacement batteries into the battery tray.
- Re-connect the battery connector to the control module
- Re-attach the battery bracket to secure batteries in place using the same two (2) bolts in step 4
- Re-attach the battery cover using the same nine (9) bolts removed in steps 1 through 3.

Attention: Charge battery 12 hours before initial use.

Battery Care

⚠ WARNING: If a battery leak develops, avoid contact with the leaking acid and place the damaged battery in a plastic bag. Refer to the disposal instructions below. If acid comes into contact with skin or eyes, flush with cool water for at least 15 minutes and contact a physician.

Battery Care:

Charge a new battery for at least 12 hours before initial use. Never charge the battery longer than 24 hours. Overheating or undercharging the battery may shorten battery life and decrease product run time.

After the first charge, recharge the battery for at least 12 hours after each use. Charge the battery after each use, regardless of how long the product was used.

Do not allow the battery to run down completely before charging.

Charge the battery at least once per month, even if the product has not been used.

Charge the battery before storing the product. Leaving the battery in a discharged condition can result in a battery that will no longer take a charge.

Do not store in freezing or below freezing temperatures.

Charger:

The charger supplied with the scooter should be regularly examined for damage to the cord, plug, enclosure and other parts and in the event of such damage, the scooter must not be charged until the charger has been repaired or replaced.

Battery Disposal



CONTAINS SEALED LEAD-ACID BATTERY. BATTERY MUST BE RECYCLED.

Your Razor product uses sealed lead-acid batteries which must be recycled or disposed of in an environmentally sound manner. Do not dispose of a lead-acid battery in a fire. The battery may explode or leak. Do not dispose of a lead-acid battery in your regular household trash. The incineration, land filling or mixing of sealed lead acid batteries with household trash is prohibited by law in most areas. Return exhausted batteries to a federal or state approved lead-acid battery recycler or a local seller of automotive batteries. If you live in Florida or Minnesota, it is prohibited by law to throw away lead-acid batteries in the municipal waste stream.