

**Tools Required:** (Not included)

- A. 5mm Allen wrench
- B. 10mm open wrench

**⚠ WARNING**

Do not use non-Razor products with your Razor electric scooter. The scooter has been built to certain Razor design specifications. Certain aftermarket parts may or may not be compatible.

As with all consumer electronics, use of compatible batteries and chargers is strongly recommended. Failure to do so may pose a fire hazard.

Examine the battery, charger and their connectors for excessive wear or damage each time you charge the battery. If damage or excessive wear is detected, do not use the charger or the vehicle until you have replaced the worn or damaged part.

Battery connectors may contain lead and lead compounds. **Wash your hands after handling.**

**⚠ CAUTION:** To avoid potential shock or other injury, turn power switch **OFF** and disconnect charger before removing or installing the batteries. Failure to follow these steps in the correct order may cause irreparable damage.

**Step 1**

Remove the four hex screws on the deck using a 5mm Allen wrench (note) the two screws on the front are held by size 10mm nuts.

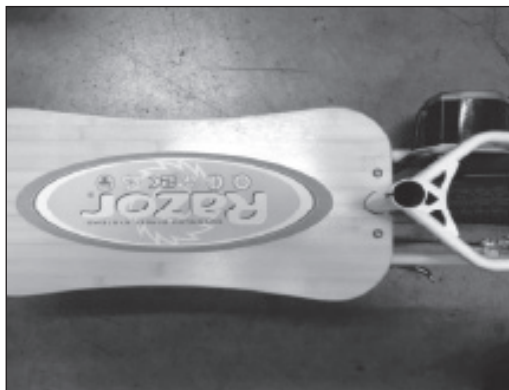


Figure 1

**Step 2**

Remove the deck from the unit and lift and remove the plastic battery holder.

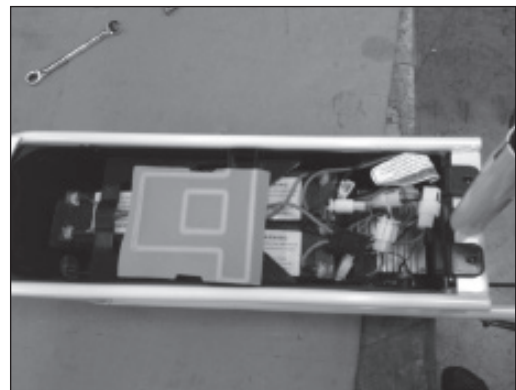


Figure 2

### Step 3

Locate and disconnect the battery connector by depressing the locking pin.

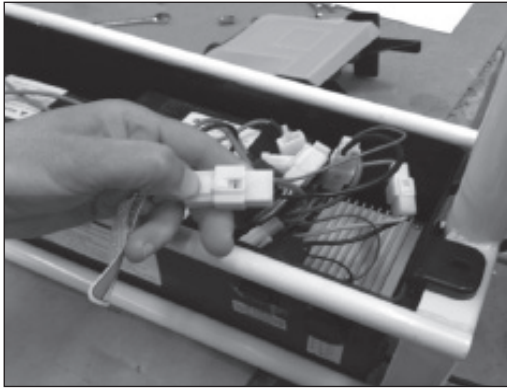


Figure 3

### Step 4

Lift and remove from the tray the battery with the longer wires and then using both hands lift and remove the other two batteries.

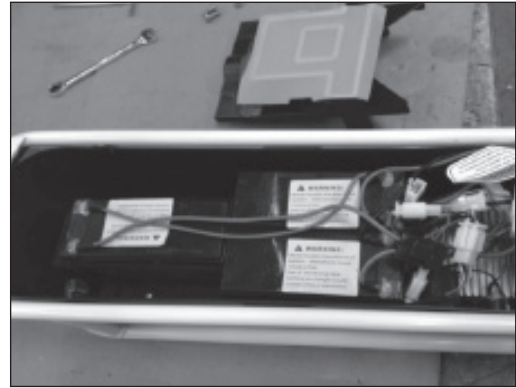


Figure 4

### Step 5

Reverse the procedures

- Place the batteries back on tray and secure them with battery holder and re-connect.
- Re-attach Deck with 4 bolts.

**ATTENTION: Charge battery 12 hours before using**

### Battery Care

**⚠ WARNING:** If a battery leak develops, avoid contact with the leaking acid and place the damaged battery in a plastic bag. Refer to the disposal instructions below. If acid comes into contact with skin or eyes, flush with cool water for at least 15 minutes and contact a physician.

#### Battery Care:

Charge a new battery for at least 18 hours before you use it in your product for the first time. Never charge the battery longer than 30 hours. Overheating or undercharging the battery may shorten battery life and decrease product run time.

After the first charge, recharge the battery for at least 12 hours after each use. Charge the battery after each use, regardless of how long the product was used.

Do not allow the battery to run down completely before charging.

Charge the battery at least once per month, even if the product has not been used.

Charge the battery before storing the product. Leaving the battery in a discharged condition can result in a battery that will no longer take a charge.

Do not store in freezing or below freezing temperatures

#### Charger:

The charger supplied with the scooter should be regularly examined for damage to the cord, plug, enclosure and other parts and in the event of such damage, the scooter must not be charged until the charger has been repaired or replaced.

### Battery Disposal



CONTAINS SEALED LEAD-ACID BATTERY. BATTERY MUST BE RECYCLED.

Your Razor product uses sealed lead-acid batteries which must be recycled or disposed of in an environmentally sound manner. Do not dispose of a lead-acid battery in a fire. The battery may explode or leak. Do not dispose of a lead-acid battery in your regular household trash. The incineration, land filling or mixing of sealed lead acid batteries with household trash is prohibited by law in most areas. Return exhausted batteries to a federal or state approved lead-acid battery recycler or a local seller of automotive batteries. If you live in Florida or Minnesota, it is prohibited by law to throw away lead-acid batteries in the municipal waste stream.

**Need Help?** Visit our website at [www.razor.com](http://www.razor.com) or call toll-free at **866-467-2967** Monday - Friday 8:00am - 5:00pm Pacific Time.