

**Required Tool: (Not included)**

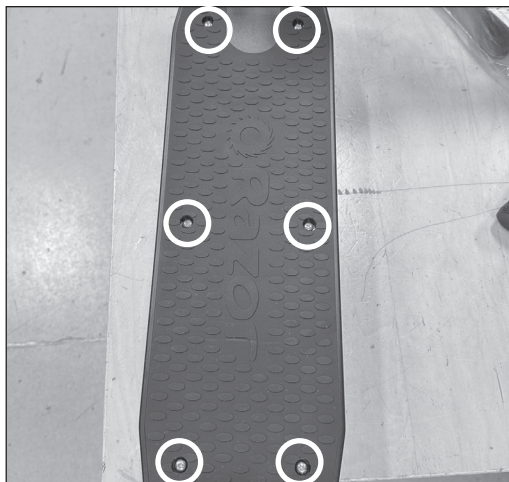
A. Phillips screwdriver

**⚠ WARNING**

**⚠ CAUTION:** To avoid potential shock or other injury, turn power switch **OFF** and disconnect charger before conducting any assembly or maintenance procedures. Failure to follow these steps in the correct order may cause irreparable damage.

**Step 1**

Using a Phillips screwdriver, remove six (6) screws from the deck. Remove the deck from the unit and set aside.

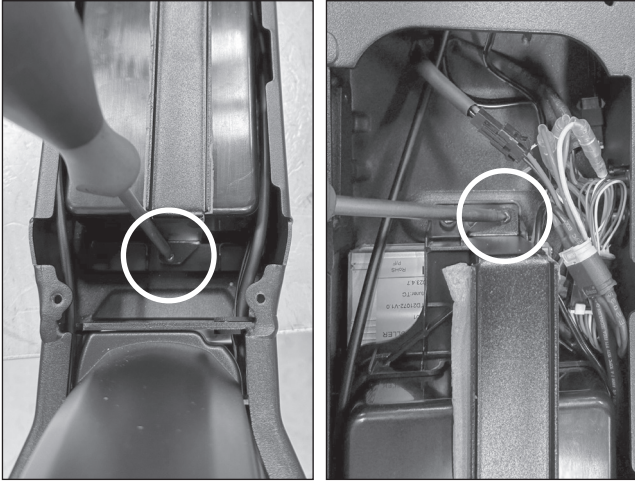
**Step 2**

Locate and disconnect all the connectors from the controller.



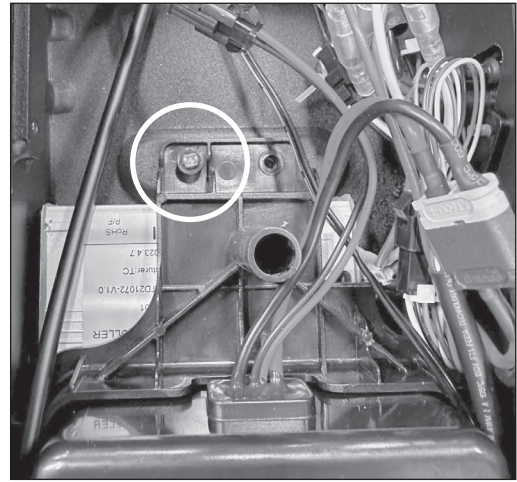
### Step 3

Using a Phillips screwdriver, remove two (2) screws from the battery bracket. Remove the battery bracket and set aside.



### Step 4

Using a Phillips screwdriver, remove one (1) screw from the bracket that holds the controller onto the unit. Remove the controller from the unit.



### Step 5

Reverse the procedures to install the new controller.

**ATTENTION: Charge battery 6 hours before using.**