



**ELECTRIC PARTY POP/ELECTRIC TEKNO  
BATTERY INSTALLATION  
REPLACEMENT PROCEDURES  
PART # W13111701003**

**Required Tools: (Not included)**

A. Phillips screwdriver

**⚠ WARNING**

**⚠ CAUTION:** To avoid potential shock or other injury, turn power switch OFF and disconnect charger before conducting any assembly or maintenance procedures. Failure to follow these steps in the correct order may cause irreparable damage.

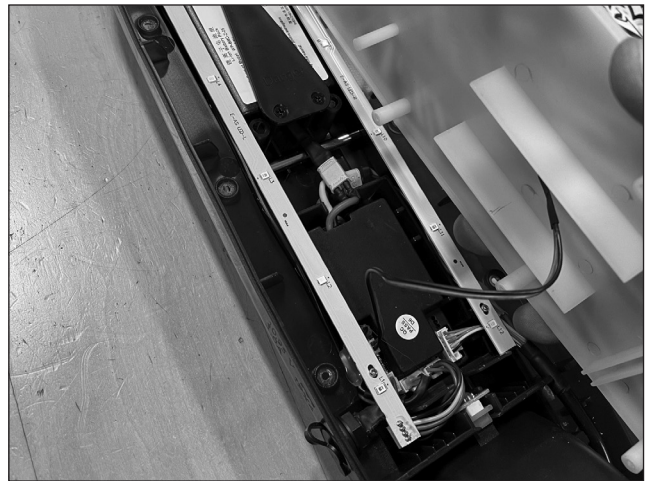
**Step 1**

Using a Phillips screwdriver, remove ten (10) screws from the bottom of the unit.



**Step 2**

Flip the unit over and lift the deck being careful not to pull the wires from the sensor pad. Set the deck cover aside.



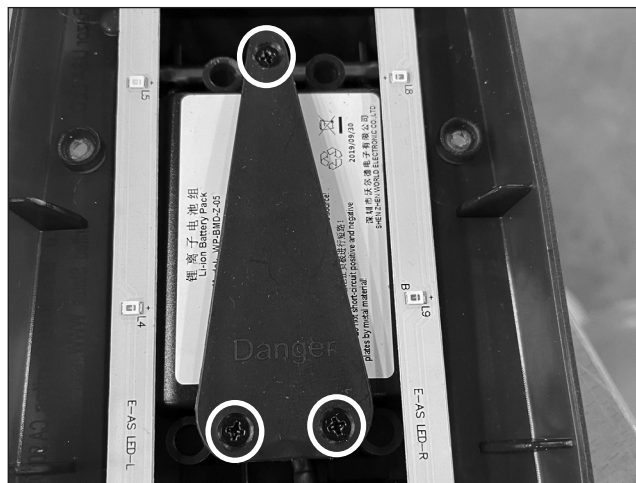
### Step 3

Locate and disconnect the Battery from the controller.



### Step 4

Using a Phillips screwdriver, remove three (3) screws from the battery holder and carefully remove the battery.



### Step 5

Reverse the steps.

**ATTENTION: Charge battery 4 hours before using.**