

Required Tools: (Not included)

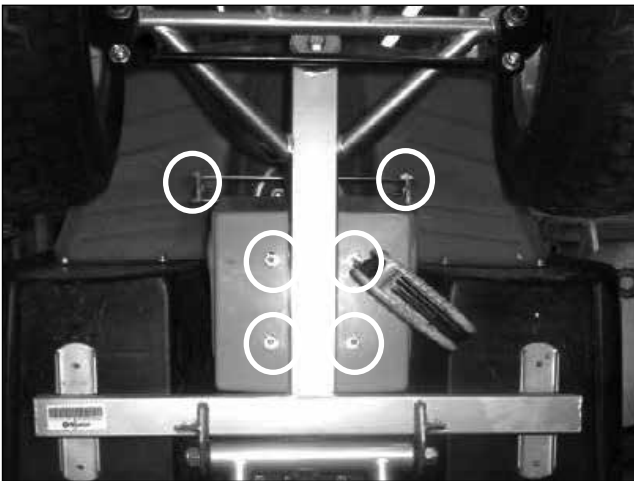
- 5 mm Allen wrench
- Phillips screwdriver
- 6 mm Allen wrench
- 10 mm Wrench

⚠ WARNING

⚠ CAUTION: To avoid potential shock or other injury, turn power switch OFF and disconnect charger before conducting any assembly or maintenance procedures. Failure to follow these steps in the correct order may cause irreparable damage.

Step 1

Make sure the power switch is in the "OFF" position. Use the rear carry handle to carefully lift the Dirt Quad up on its end. Using a 5 mm Allen wrench, remove the four (4) bolts on the bottom of the battery cover. Using a Phillips screwdriver, remove the two (2) screws on the support bracket of the fairing. Using the rear carry handle, slowly lower the Dirt Quad back down to the ground.

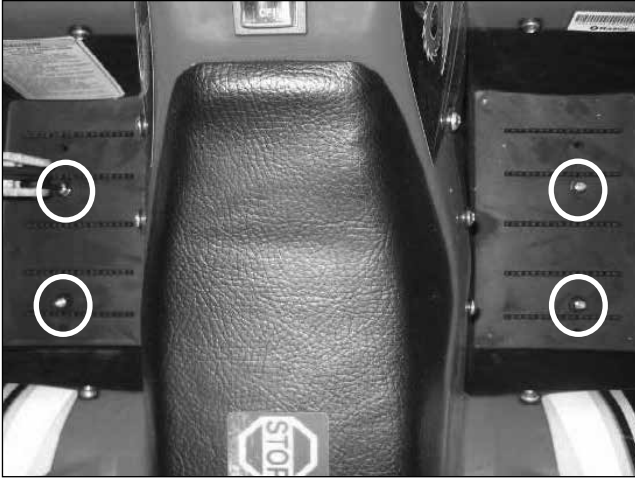
**Step 2**

Using a 6 mm Allen wrench, remove the four (4) bolts on the handlebar clamps and detach handlebars.



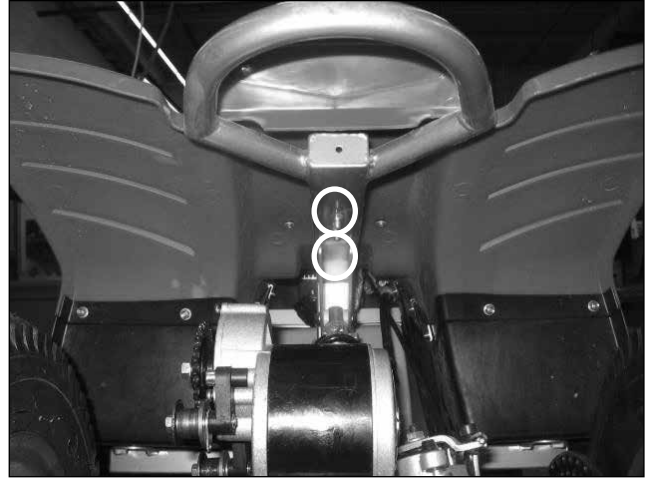
Step 3

Using a 5 mm Allen wrench, remove the four (4) bolts on both sides of the footrest platforms.



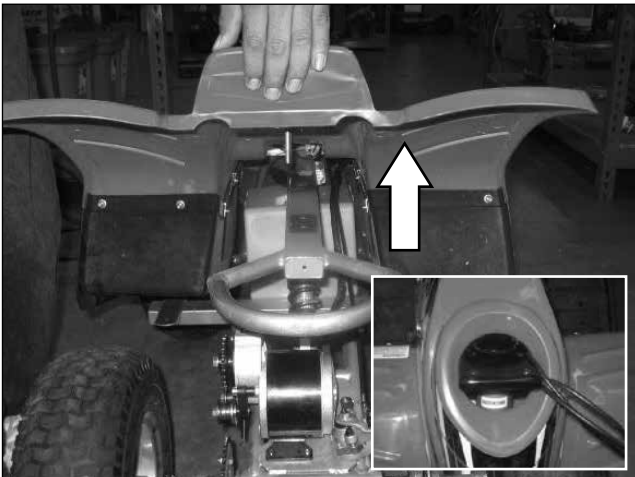
Step 4

Using a 10 mm wrench, remove the two (2) lock nuts underneath the rear fender.



Step 5

Lift up the plastic body. Carefully maneuver the front of the body plastic around the top of the steering tube (See inset).



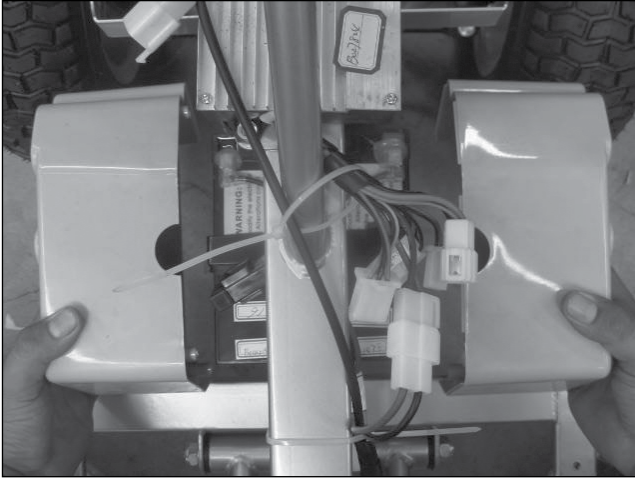
Step 6

Using a Phillips screwdriver, remove the three (3) screws on the right side of the battery cover (as if riding product).



Step 7

Remove both sides of the battery cover.



Step 8

Locate and disconnect the connector between the motor and the control module (See inset).



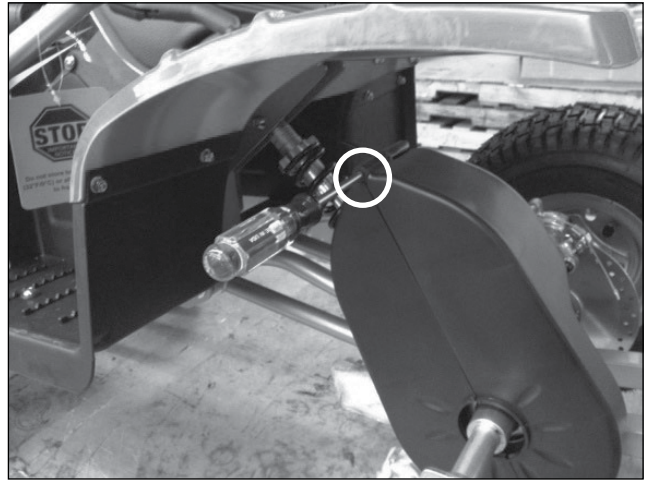
Step 9

To better access the chain guard, remove the rear/left wheel. Using a 6 mm Allen wrench, loosen and remove the four (4) bolts that hold the wheel in place and pull the wheel out.



Step 10

Using a Phillips screwdriver, remove the screw on top of the chain guard.



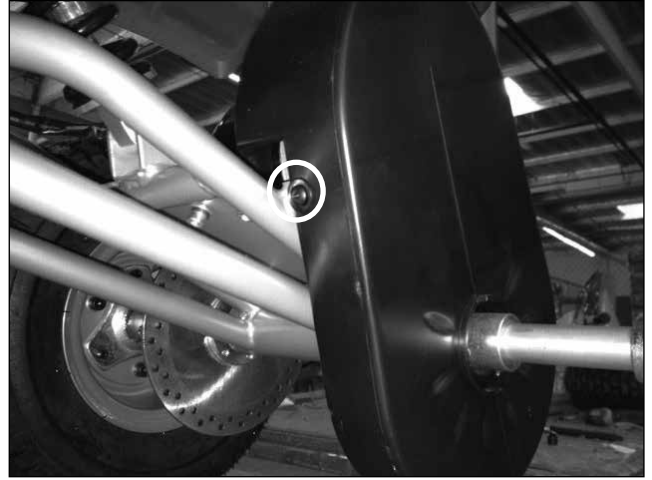
Step 11

Remove two (2) screws located at the bottom on the opposite side of the chain guard.



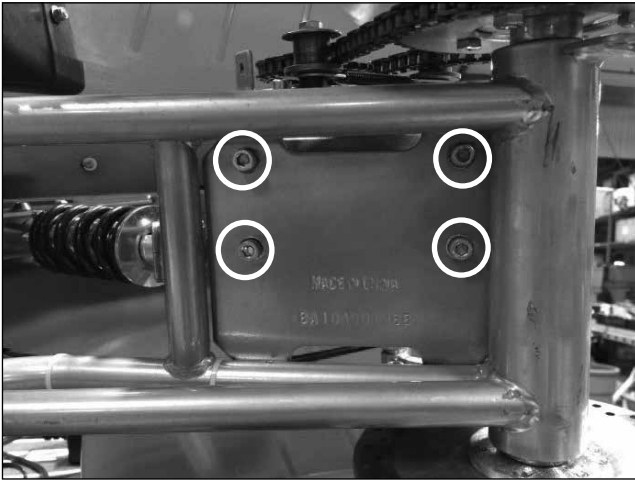
Step 12

Remove one (1) screw located on the left side at the center of the chain guard. Once you remove the screws, you can now split open the chain guard and remove it from the unit.



Step 13

Turn the unit on its side. Using a 5 mm Allen wrench, loosen and remove the four (4) hex bolts that keep the motor attached to the frame. Remove the motor and replace.



Step 14

To install a new motor, reverse steps 1-13.

ATTENTION: Charge battery 12 hours before using.