



## GROUND FORCE (V1+) CONTROL MODULE INSTALLATION INSTRUCTIONS

**NOTE:** If you received a control module AND throttle, make sure to replace BOTH parts on your unit.

### Tools Required: (Not included)

- A. Phillips head screwdriver
- B. 4mm Allen wrench
- C. 5mm Allen wrench
- D. 8mm open wrench

**⚠ CAUTION:** To avoid potential shock or other injury, turn power switch **OFF** and disconnect charger before removing or installing the batteries. Failure to follow these steps in the correct order may cause irreparable damage.

### Step 1

Using a 5mm Allen wrench, remove the four hex bolts on the battery cover located behind the seat and remove.



Figure 1

### Step 2

Cut the zip tie holding the wires to the battery bracket. Using a 4mm Allen wrench, loosen the two bolts on the battery bracket and remove from battery.

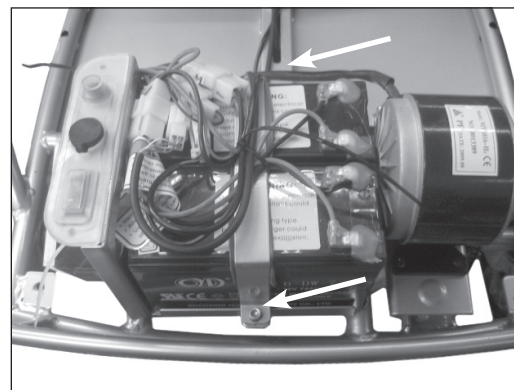


Figure 2

## Step 3

To remove the control module, you will need to remove the batteries in order to gain access to the screws that hold the control module in place. Locate the white plastic connector on the battery and disconnect it from the white plastic connector attached to the control module by depressing the tab (See insert). Using both hands, carefully remove the batteries from the battery tray.

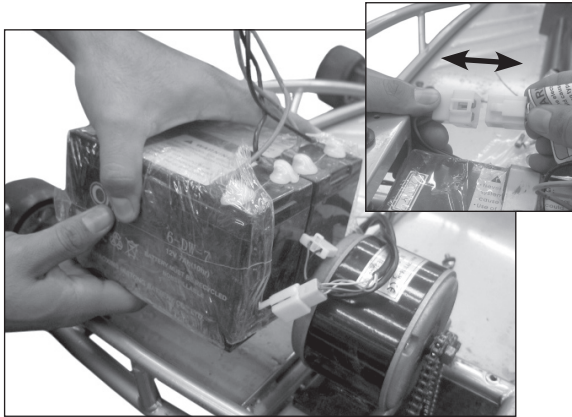


Figure 3

## Step 4

Carefully cut the zip tie holding the wires together (See Insert). Disconnect the remaining four white plastic connectors attached to the control module by depressing the tabs. Using a phillips head screwdriver and 8mm open wrench, loosen the two screws and locknuts holding the control module in place and remove.

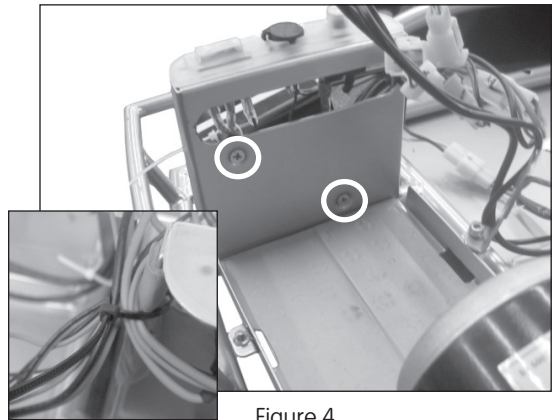


Figure 4

## Step 5

Install the new control module using the same two screws previously removed. Reconnect connectors A; B; C & E (Refer to figure 6). Using both hands, carefully place the batteries back into the battery tray and reconnect the battery connector to connector D on the control module.

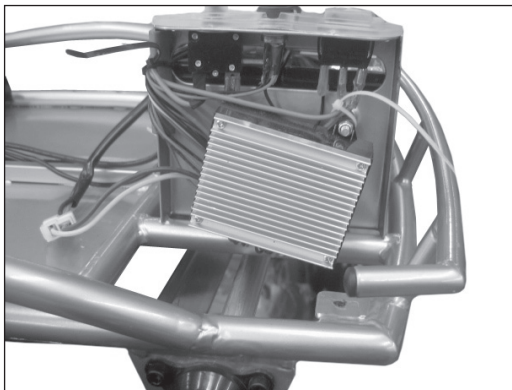


Figure 5

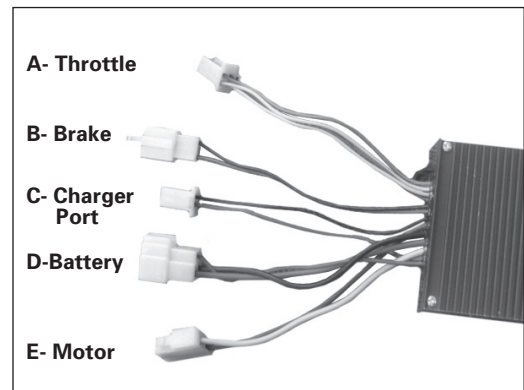


Figure 6

## Step 6

1. Reattach battery bracket over the batteries to secure batteries in place.
2. Place battery cover back over the batteries and reattach using the same two hex bolts previously removed.

**ATTENTION: Charge unit at least 18 hours before riding.**

v1 - 12/09