

Required Tools: (Not included)

- A. Phillips screwdriver
- B. 2.5 mm Allen wrench
- C. 4 mm Allen wrench
- D. 5 mm Allen wrench

⚠ WARNING

⚠ CAUTION: To avoid potential shock or other injury, turn power switch OFF and disconnect charger before conducting any assembly or maintenance procedures. Failure to follow these steps in the correct order may cause irreparable damage.

Step 1

Using a 5 mm Allen wrench, remove the four (4) hex bolts that attach the seat to the frame.

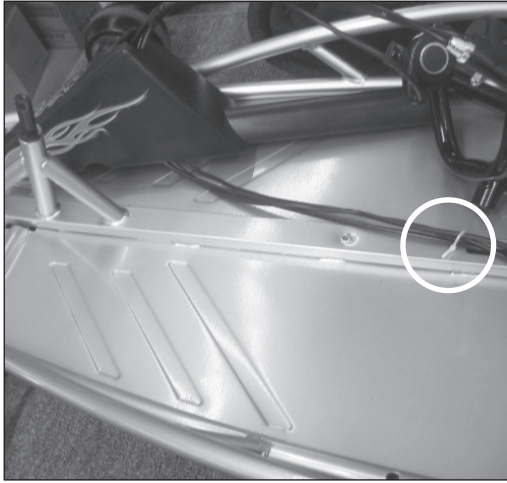
**Step 2**

Using a 5 mm Allen wrench, remove the hex bolt on the steering wheel and place the steering wheel aside.



Step 3

Using a Phillips screwdriver, remove the two (2) screws on the steering column cover. Then carefully cut the zip tie holding the wires together.



Step 4

Using a 2.5 mm Allen wrench, loosen the set screw located under the light indicator on the throttle and remove throttle from steering wheel.



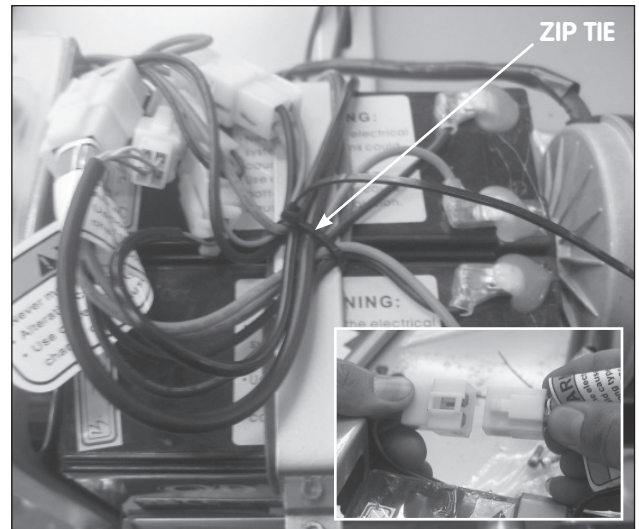
Step 5

Using a 4 mm Allen wrench, remove the four (4) hex bolts on the battery cover. Set battery cover aside.



Step 6

Follow the wires from the throttle to the control module. Disconnect the throttle by depressing the tab on the white plastic connector attached to the control module (see inset). Then carefully cut the zip tie and remove throttle.



Step 7

Reverse the steps to install the new E-Kit.

- Place the new throttle on the handlebar and secure in place by re-tightening the set screw under the light indicator. Reconnect the white connector at the end of the throttle back into the white connector on the control module.
- Reconnect the white plastic connector from the throttle to the white plastic connector on the control module.
- Reattach the battery cover; the steering wheel; steering cover and the seat and tighten securely into place using the same hardware used to remove.

ATTENTION: Charge battery 12 hours before using.