

Tools Required: (Not included)

- A. Phillips head screwdriver
- B. Flat head screwdriver
- C. 5mm Allen wrench
- D. 10mm open wrench

⚠ WARNING

⚠ CAUTION: To avoid potential shock or other injury, turn power switch **OFF** and disconnect charger before removing or installing the batteries. Failure to follow these steps in the correct order may cause irreparable damage.

Step 1

Remove the four hex screws on the deck using a 5mm Allen wrench(note) the two screws on the front are held by size 10mm nuts.



Figure 1

Step 2

Remove the deck from the unit and lift and remove the plastic battery holder.



Figure 2

Step 3

Locate and disconnect the charger port connector from the controller.



Figure 3

Step 4

Using a phillips screw driver remove 2 screws on the front of the charger port.



Figure 4

Step 5

Using a Phillips screw driver remove one more screw located on the charger port at the back next to the power switch.

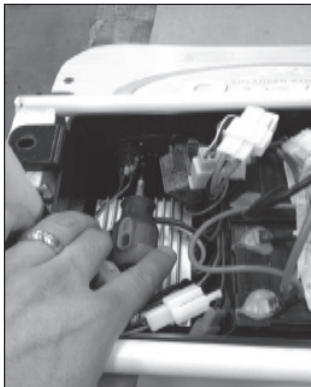


Figure 5

Step 6

Using a flat screw driver remove the silicone at the back of the charger port and push the charger port out of the battery tray.



Figure 6

Step 7

Reverse the procedures

- Re-attach Deck with 4 screws.

ATTENTION: Charge battery 12 hours before using