

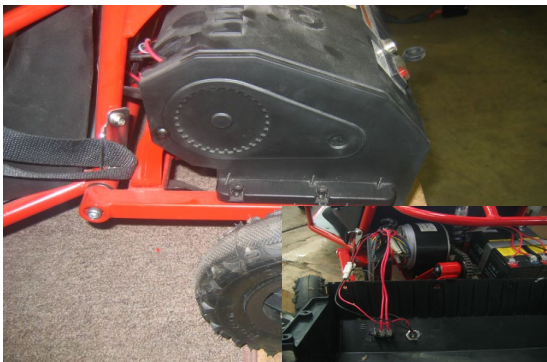
Dune Buggy Disc Brake Replacement Procedures



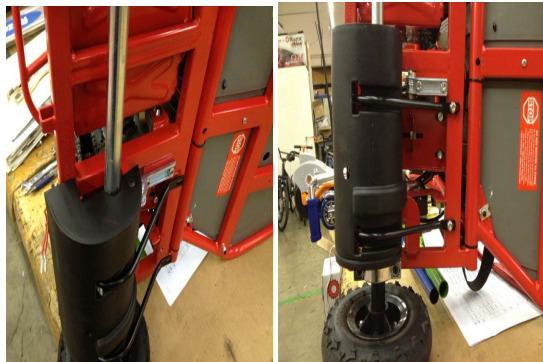
(1) Using a 17mm open wrench loosen up the nut located at the center of the rim, wrench must turn counter clock wise to loosen up the nut, you can apply the brake of the unit to prevent the wheel from turning as you try to loosen up the nut.



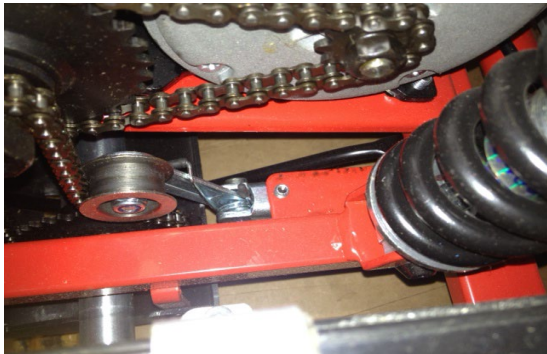
(2) Remove the 4 phillips screws at the back of the battery cover, Remove two 4MM hex screws on the right side of the battery tray



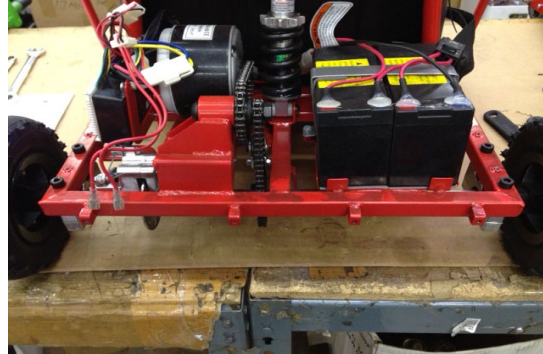
(3) Remove two 4MM hex screws on the left side of the battery cover and 1 phillip screw located in the middle left side of the battery cover and remove the cover away from the unit carefully not to pull the wires connected to the power switch or charger port.



(4) Flip the unit on the side to get acces to the bottom part of the motor cover, Using a Phillip screw driver remove the screw located on the side and using a 5MM Allen wrench remove the 3 hex bolts that hold it onto the frame and remove.



(5) Dismount the chain from the axle sprocket, by releasing the tension from the chain tensioner and carefully turn the axle as you push the chain out of the sprocket.



(6) Using a 6mm Allen wrench remove two bolts from each side from the bearing holder and remove the axle, remove wheels from axle and replace the disc brake.

Reverse the procedures to install.

Attention: Charge battery 12 hours before using