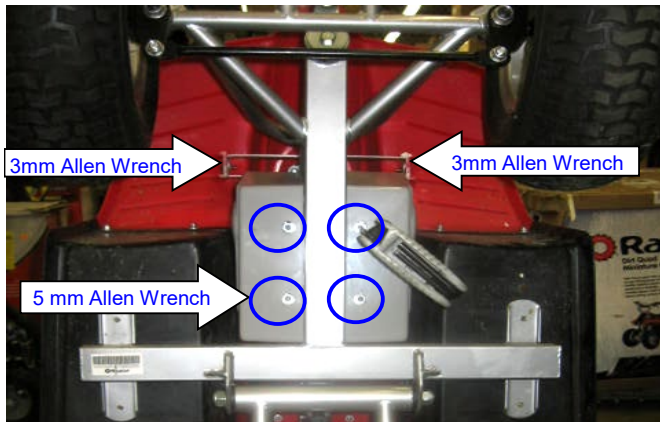


DIRT QUAD THROTTLE INSTALLATION INSTRUCTIONS



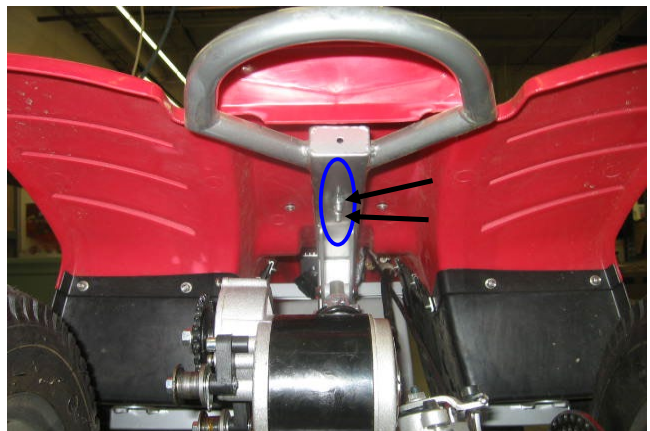
Step 1. Make sure power switch is in the "OFF" position. Use the rear carry handle to carefully lift Dirt Quad up on end. Using a 5mm hexagonal key wrench, remove the 4 bolts on the bottom of the battery cover. Using a 3mm hexagonal key wrench, remove the 2 bolts on the support bracket. Using the rear carry handle, slowly lower the Dirt Quad back down to the ground



Step 2. Using a 6mm hexagonal key wrench, remove the 4 bolts on the handlebar clamps and detach handlebars

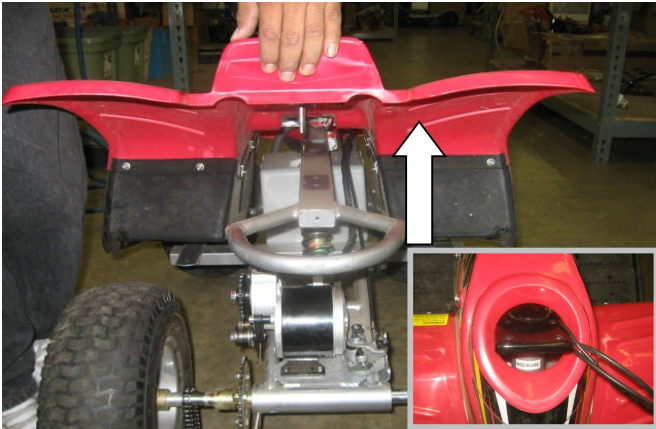


Step 3. Using a 4mm hexagonal allen wrench, remove the 4 bolts on both sides of the footrest platforms

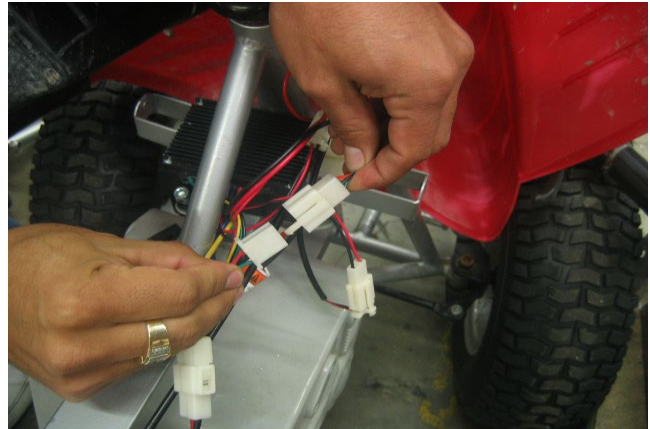


Step 4. Using a # 10 open wrench, remove the 2 bolts underneath the rear fender

DIRT QUAD THROTTLE INSTALLATION INSTRUCTIONS



Step 5. Lift up the plastic body. Carefully maneuver the front of the body plastic around the top of the steering tube (See insert)



Step 6. Follow the throttle wire and disconnect it from control module, Locate the throttle cable and cut the zip tie.



Step 5. Using a 2.5mm Allen wrench loosen the throttle screw but do not remove, move throttle away from the grip.



Step 6. Carefully wedge the flat head screwdriver under the edge of the handlebar grip add a small amount of lubricant or water and remove the grip. Note: save the grip for re-assembly

Reverse Installation Steps

- 1) Place the new throttle back on the handle bar, clean the grip from any water or lubricant and re-install
- 2) Re-connect the throttle to control module *Note:
Check that all connectors are securely attached, especially to the power switch as it is possible connector(s) may get detached when lifting up the plastic body
- 3) Lower the plastic body back down over the main frame and re-fasten the 2 bolts to the rear fender
- 4) Re-fasten the 4 bolts on both of the footrest platforms
- 5) Re-attach the handlebars
- 6) Lift Dirt Quad up and re-fasten the bolts to the battery cover and support bracket
- 7) Carefully lower Dirt Quad back down; installation complete

Attention: Charge Battery 12 hours before using