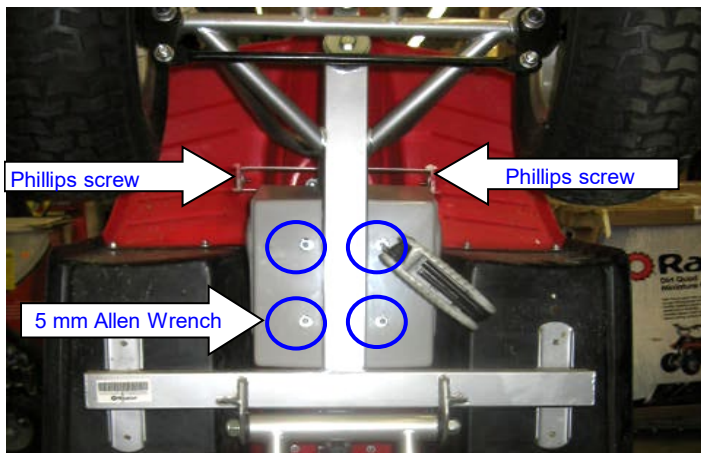


DIRT QUAD MOTOR INSTALLATION INSTRUCTIONS



1) Make sure power switch is in the "OFF" position. Use the rear carry handle to carefully lift Dirt Quad up on end. Using a 5mm Allen wrench, remove the 4 bolts on the bottom of the battery cover. Using a Phillips screw driver, remove the 2 screws on the support bracket of the fairing.

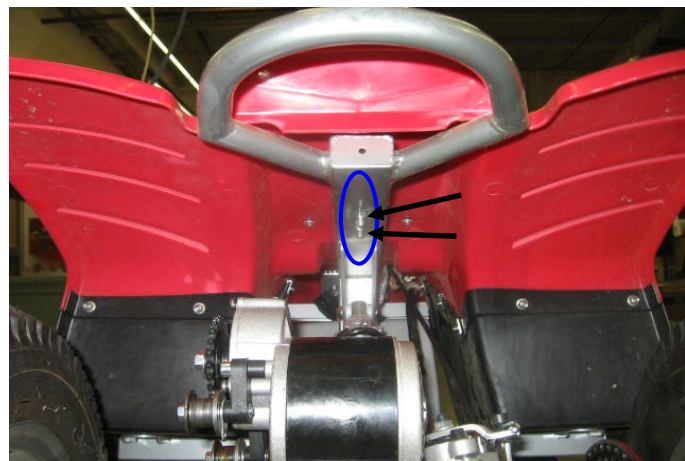
Using the rear carry handle, slowly lower the Dirt Quad back down to the ground



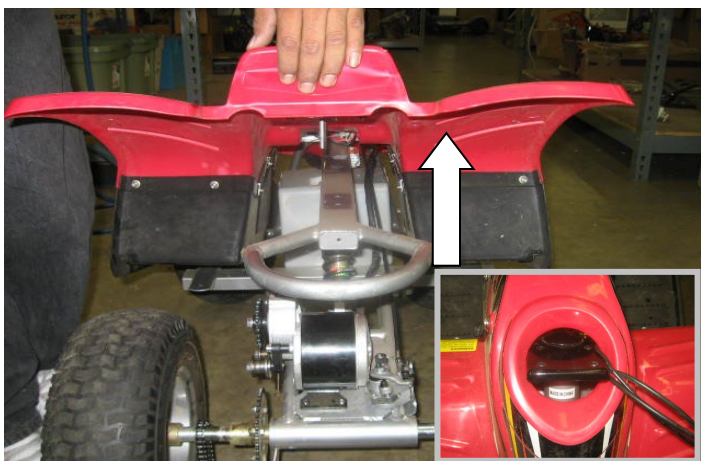
3) Using a 5mm allen wrench, remove the 4 bolts on both sides of the footrest platforms.



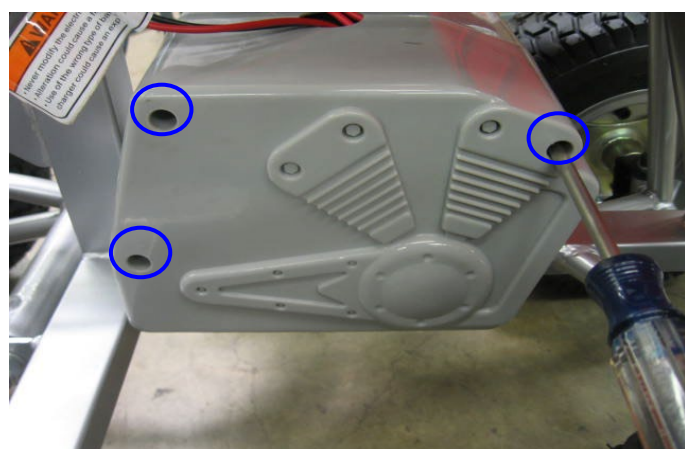
2) Using a 6mm Allen wrench, remove the 4 bolts on the handlebar clamps and detach handlebars.



4) Using a 10mm wrench, remove the 2 lock nuts underneath the rear fender.

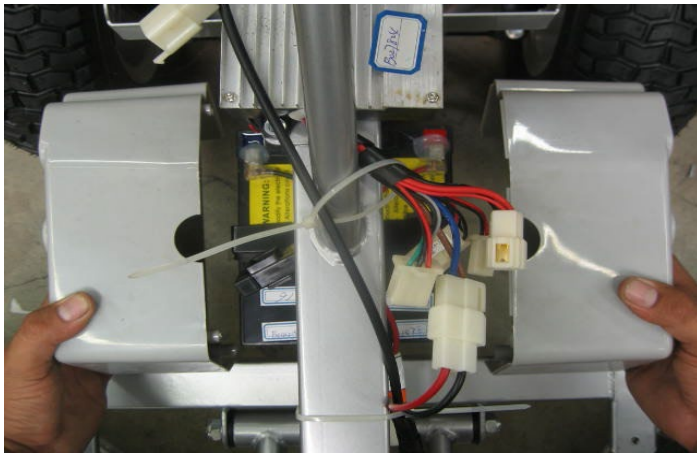


5) Lift up the plastic body. Carefully maneuver the front of the body plastic around the top of the steering tube (See insert)



6) Using a phillip screw driver, remove the 4 screws on the right side of the battery cover (as if riding product)

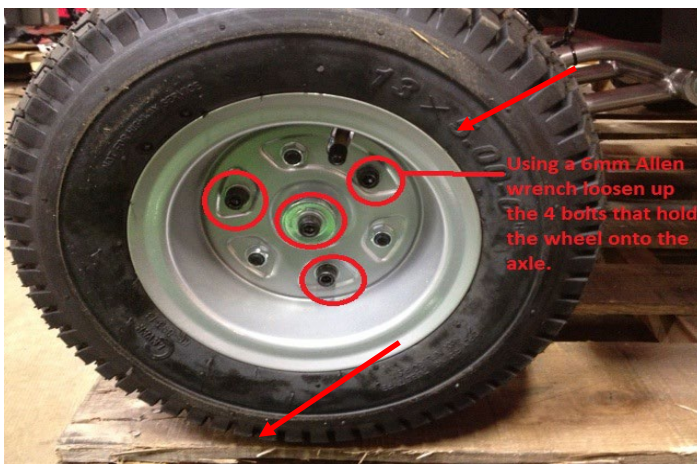
DIRT QUAD MOTOR INSTALLATION INSTRUCTIONS



7) Remove both sides of the battery cover.



8) Locate and Disconnect the connector between the Motor and the control module (See insert)



9) To have better access to your chain Guard you will need to remove the rear / left wheel, Using a 6mm Allen wrench loosen up and remove the 4 bolts that hold the wheel in place and pull the wheel out.



10) Using a Philip screw driver, remove the screw on top the chain guard

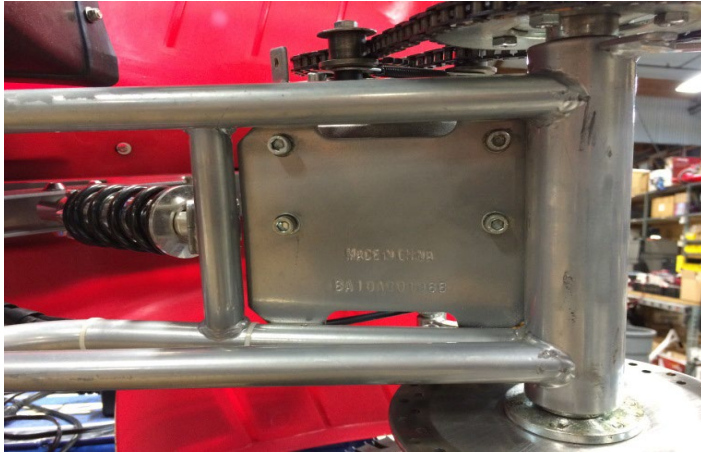


11) Remove two screws located at the bottom on the oposite side of the chain guard.



12) Remove one more screw located on the left side at the center of the chain guard, once you remove the screws you can now split open the chain guard and remove it from the unit.

DIRT QUAD MOTOR INSTALLATION INSTRUCTIONS



13) Turn the unit on its side and using a 5mm Allen wrench loosen up and remove the 4 hex bolts that keep the motor attached to the frame, remove motor and replace.

Reverse the procedures.