



# CRAZY CART ON/OFF SWITCH INSTALLATION INSTRUCTIONS

W13112445101

## Tools Required: (Not included)

- A. 5 mm Allen wrench
- B. 10 mm wrench
- C. Flathead screwdriver

## ⚠WARNING

**⚠CAUTION:** To avoid potential shock or other injury, turn power switch OFF and disconnect charger before removing or installing the on/off switch. Failure to follow these steps in the correct order may cause irreparable damage.

## Step 1

Using a 5 mm Allen wrench, loosen the four (4) hex bolts that attach the seat to the frame (Figure 1a) and remove seat. Remove the two (2) hex bolts on the Drift Bar cover (Figure 1b) and remove.

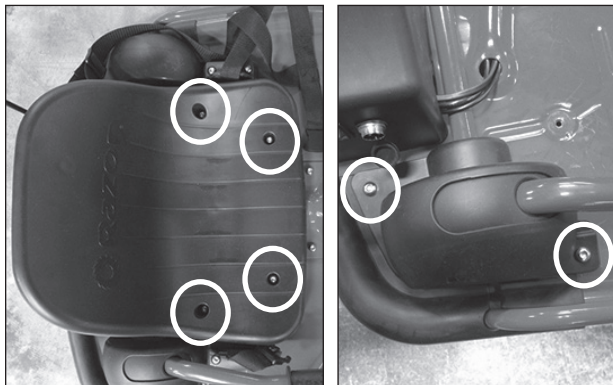


Figure 1a

Figure 1b

## Step 2

Using a 5 mm Allen wrench and a 10 mm wrench, loosen the two (2) hex bolts on the side of the battery cover (Figure 2a) and the two (2) locknuts, located underneath the unit (Figure 2b).

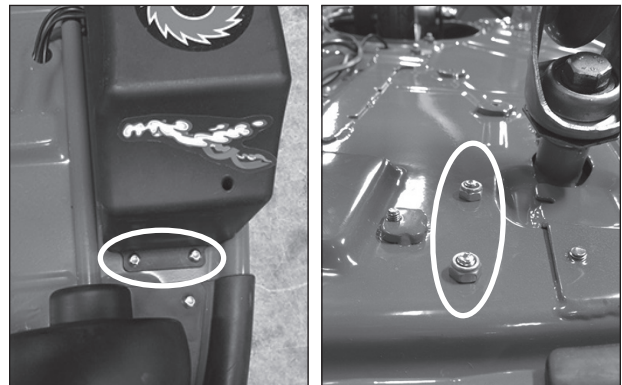


Figure 2a

Figure 2b

**Need Help?** Visit our website at [www.razor.com](http://www.razor.com) or call toll-free at **866-467-2967** Monday - Friday 8:00 AM - 5:00 PM PST.

### Step 3

Remove the battery cover by lifting up the right side first then slide off. Be careful not to pull any of the wires that are attached to the cover.

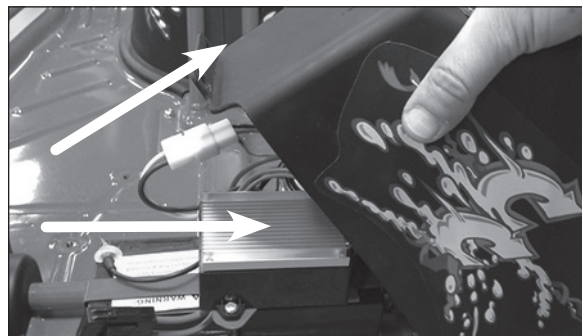


Figure 3

### Step 4

Carefully unplug the three (3) wires attached to the back of the on/off switch.

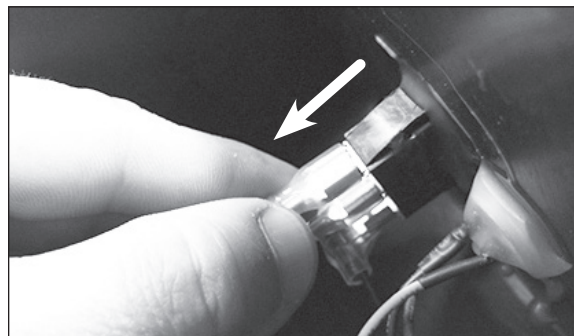


Figure 4

### Step 5

Using a flathead screwdriver, carefully remove the silicone from the back of the on/off switch and remove switch from battery cover.



Figure 5

### Note

Important: When installing the new on/off switch, make sure to plug the two (2) red wires from the control module to the two (2) silver prongs on the on/off switch (in no particular order). Plug the black wire from the charger port to the gold prong on the on/off switch. Do not plug the red wires into the gold prong.

(1) Gold prong —  
black wire  
charger  
port

(2) Silver prongs —  
red or yellow wire  
on/off  
switch

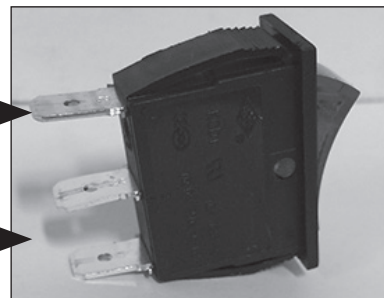


Figure 6

### Step 6

Reverse steps 1 through 5 to install the replacement on/off switch.

**ATTENTION: Charge battery 12 hours before initial use.**