



CRAZY CART CONTROL MODULE INSTALLATION INSTRUCTIONS

W25143400015
W25143499164

Tools Required: (Not included)

- A. 5 mm Allen wrench
- B. 10 mm wrench
- C. Phillips screwdriver

⚠WARNING

⚠CAUTION: To avoid potential shock or other injury, turn power switch OFF and disconnect charger before removing or installing the control module. Failure to follow these steps in the correct order may cause irreparable damage.

Step 1

Using a 5 mm Allen wrench, loosen the four (4) hex bolts that attach the seat to the frame (Figure 1a) and remove seat. Remove the two (2) hex bolts on the Drift Bar cover (Figure 1b) and remove.

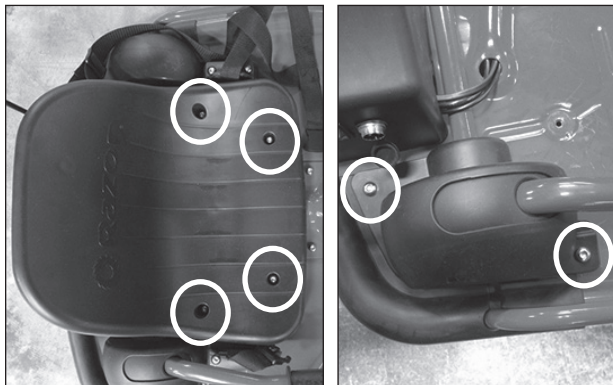


Figure 1a

Figure 1b

Step 2

Using a 5 mm Allen wrench and a 10 mm wrench, loosen the two (2) hex bolts on the side of the battery cover (Figure 2a) and the two (2) locknuts, located underneath the unit (Figure 2b).

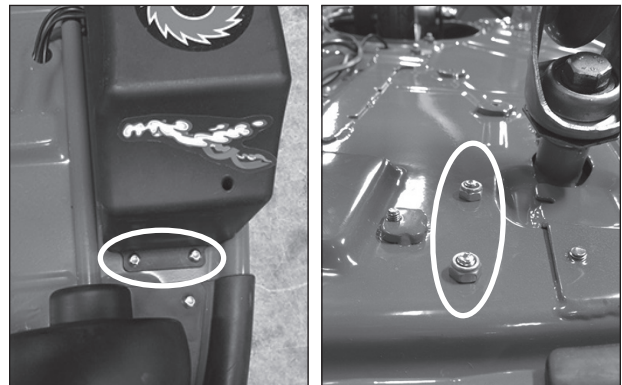


Figure 2a

Figure 2b

Need Help? Visit our website at www.razor.com or call toll-free at **866-467-2967** Monday - Friday 8:00 AM - 5:00 PM PST.

Step 3

Remove the battery cover by lifting up the right side first then slide off. Be careful not to pull any of the wires that are attached to the cover.

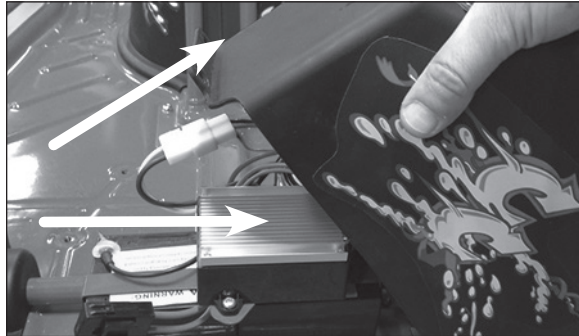


Figure 3

Step 4

Using a Phillips screwdriver, loosen the two (2) screws that are holding the control module to the battery strap.

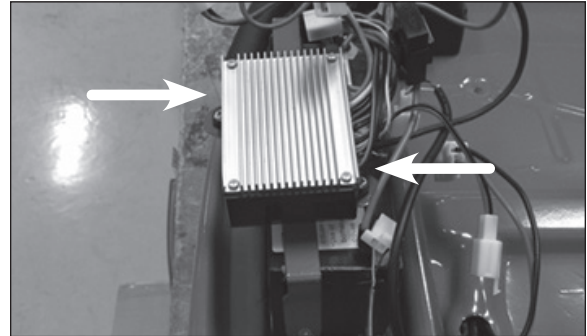


Figure 4

Step 5

Disconnect the five (5) plastic wire connectors on the control module by depressing the tab on each connector.

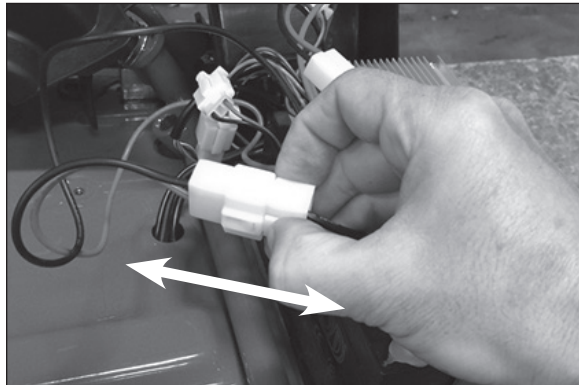


Figure 5

Step 6

Carefully disconnect the two (2) remaining connectors on the control module from the on/off switch and remove control module. Note: When installing the new control module, make sure to connect the two (2) wires, that go to the on/off switch, on the two (2) silver color prongs (no particular order).

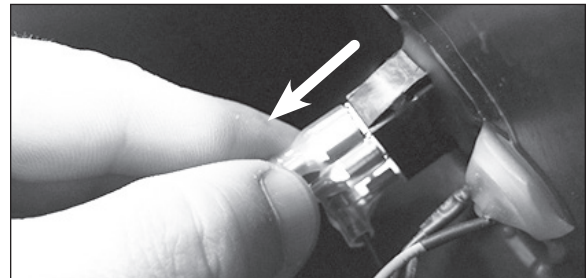


Figure 6

Step 7

Reverse steps 1 through 6 to install replacement control module.

ATTENTION: Charge battery 12 hours before initial use.