



CRAZY CART CHARGER PORT INSTALLATION INSTRUCTIONS

W25141012106

Tools Required: (Not included)

- A. 5 mm Allen wrench
- B. 10 mm wrench
- C. Flathead screwdriver
- D. 19 mm wrench

⚠WARNING

⚠CAUTION: To avoid potential shock or other injury, turn power switch OFF and disconnect charger before removing or installing the charger port. Failure to follow these steps in the correct order may cause irreparable damage.

Step 1

Using a 5 mm Allen wrench, loosen the four (4) hex bolts that attach the seat to the frame (Figure 1a) and remove seat. Remove the two (2) hex bolts on the Drift Bar cover (Figure 1b) and remove.

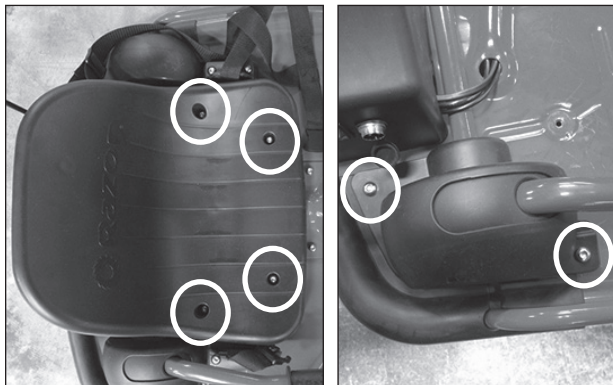


Figure 1a

Figure 1b

Step 2

Using a 5 mm Allen wrench and a 10 mm wrench, loosen the two (2) hex bolts on the side of the battery cover (Figure 2a) and the two (2) locknuts, located underneath the unit (Figure 2b).

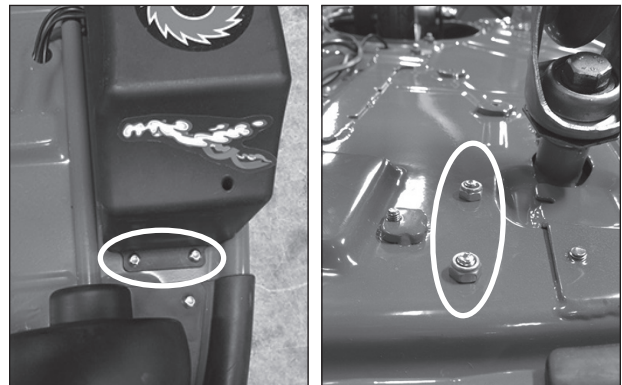


Figure 2a

Figure 2b

Need Help? Visit our website at www.razor.com or call toll-free at **866-467-2967** Monday - Friday 8:00 AM - 5:00 PM PST.

Step 3

Remove the battery cover by lifting up the right side first then slide off. Be careful not to pull any of the wires that are attached to the cover.

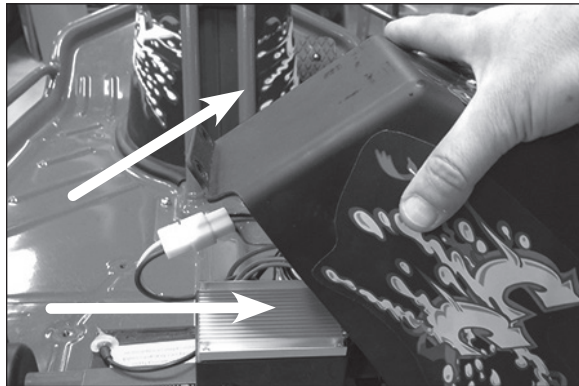


Figure 3

Step 4

Disconnect the black wire from the charger port that is connected to the top prong of the on/off switch (Figure 4a). Using a flathead screwdriver, carefully remove the silicone from the back of the charger port (Figure 4b).

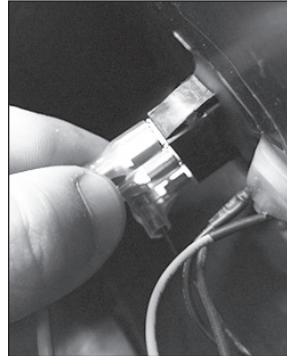


Figure 4a



Figure 4b

Step 5

Using a 19 mm wrench, loosen the locknut.

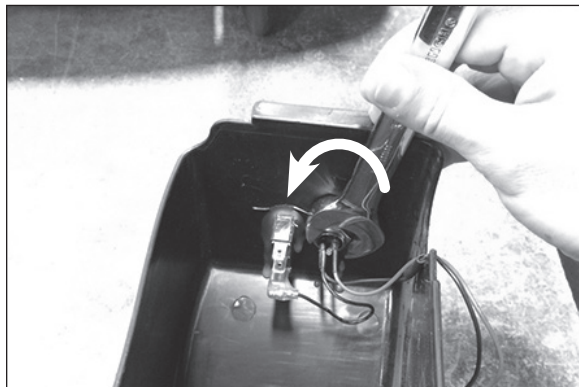


Figure 5

Step 6

Using a small pointed object, carefully depress the two (2) locking pins inside the white plastic connector attached to the charger port and gently pull them out of the connector. Remove charger port from battery cover.



Figure 6

Step 7

Reverse steps 1 through 6 to install replacement charger port.

ATTENTION: Charge battery 12 hours before initial use.