

Required Tools: (Not included)

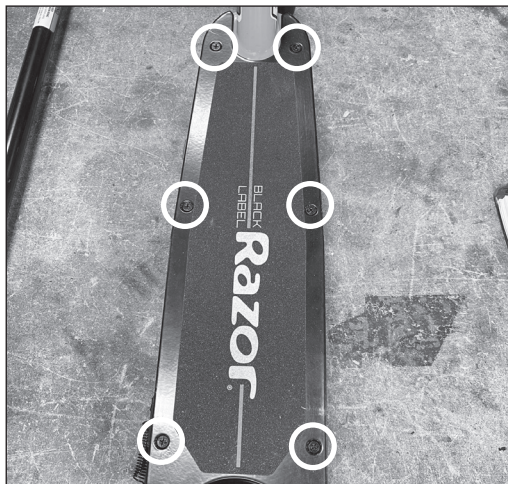
- A. Phillips screwdriver
- B. 5 mm Allen wrench
- C. Long nose needle pliers

⚠ WARNING

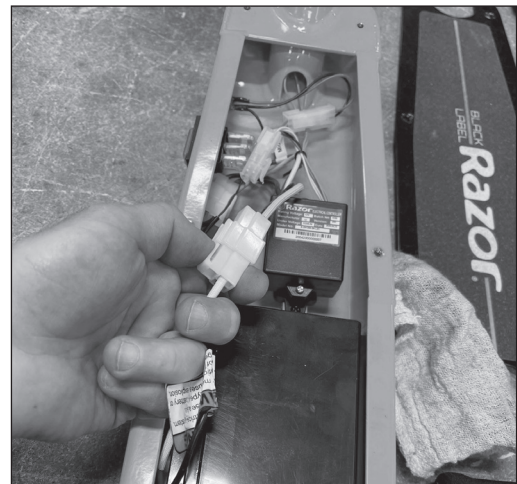
⚠ CAUTION: To avoid potential shock or other injury, turn power switch OFF and disconnect charger before conducting any assembly or maintenance procedures. Failure to follow these steps in the correct order may cause irreparable damage.

Step 1

Using a Phillips screwdriver, remove the six (6) screws on the deck cover. The locations of the screws are circled in the image below. Set deck cover aside.

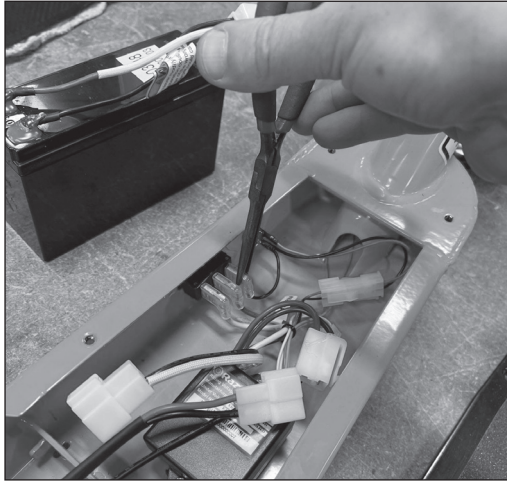
**Step 2**

Locate and disconnect all the connectors from the controller.



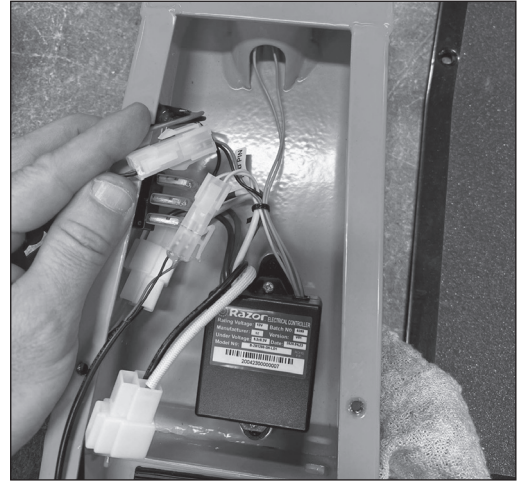
Step 3

Using long nose needle pliers, disconnect the yellow and brown connectors from the power switch.



Step 4

Using a Phillips screwdriver, remove the two (2) screws that hold the controller onto the unit.



Step 5

Using a 5 mm Allen wrench loosen up the bolts from the collar clamp and remove the t-bar.



Step 6

Disconnect the throttle from the controller.



Step 7

Reverse the steps to install.

ATTENTION: Charge battery 12 hours before using.